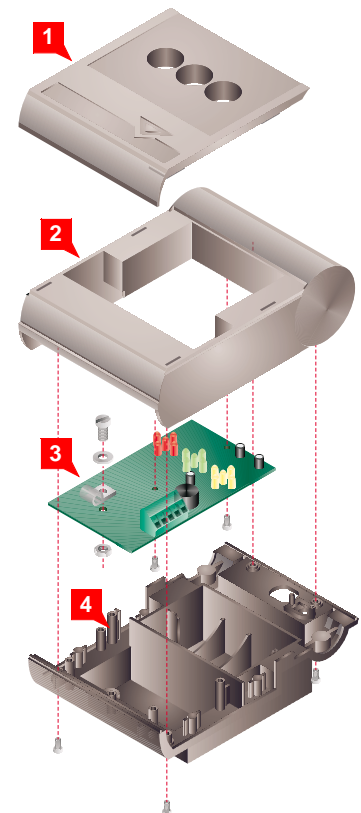




European conformity

- Directive 89/336/EEC amended on *Electromagnetic Compatibility*.*

Casing



1. Top flap
2. Top cover.
3. Circuit board
4. Bottom cover.

Application

This RVO remote display device clearly indicates whether the weight is within tolerance values. It is an indispensable accessory for visual control.

Of modular design, this RVO remote display (power supplied by the indicator) may be placed on a table, fixed to a wall or attached to the I 200 indicator.

Instrument connection

- I 200 / I 200-S

Technical data

Physical characteristics

- Weight..... approx. 0.1 kg
- Height 69 mm
- Width..... 112 mm
- Depth 152 mm

Environment characteristics

- Temperature range
 - Operation + 5°C / + 35°C
 - Storage -20°C / +60°C

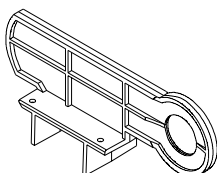
Connection

- To Input/Output interface only.
- Cable length: 30 cm.

Furniture standard

The remote display is always supplied with :

- a fixing bracket (with screw) :

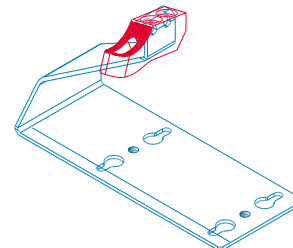


Mounting possibility

Options & Accessories

- Mounting kit

- Wall mounting kit only



* Respect of this Directive is directly conditioned by the correct execution of the installation.

////////////////////////////////////
Your weighing specialist

Illustrations are not contractual. Precia-Molen reserves the right to modify at any time, without prior notice, the information contained in this leaflet.

Offices and Factory
P.O. Box 106 - F 07000 Privas - France
Tel. 33 (0) 475 664 600
Fax 33 (0) 475 658 330
E-MAIL webmaster@preciamolen.com

RCS : 386 620 165 RCS Aubenas

**PRECIA
MOLEN™**